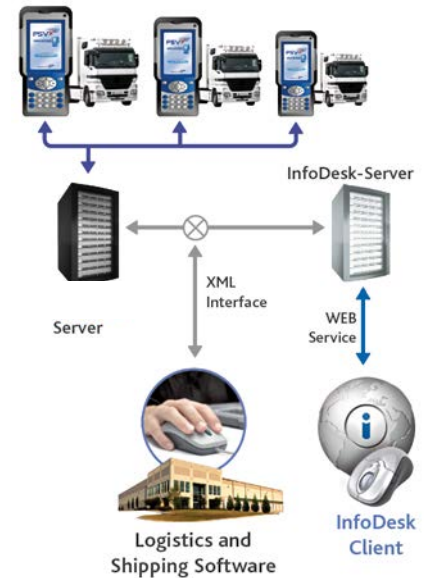


### SHORT DESCRIPTION

Your company is active in the **Transport and Logistics Industry** and you utilize Logistics and Shipping Software for the efficient processing and tracking of your logistics and shipping orders.

You also utilize the **TISLOG-Telematics Solution** to process your orders on the go (mobile processing) integrating your drivers into your IT-environment - or you are at least planning to do just that.

The question is, does your logistics and shipping software really provide you with the ability to display and analyze the information your drivers capture on their mobile devices? Do the limits of your software always become apparent when data and information from your Telematics Solution is supposed to flow into your IT environment? If this is the case - this new TISLOG System component could be exactly what you are looking for: **TISLOG office Infodesk – Your Web 2.0 Information Portal.**

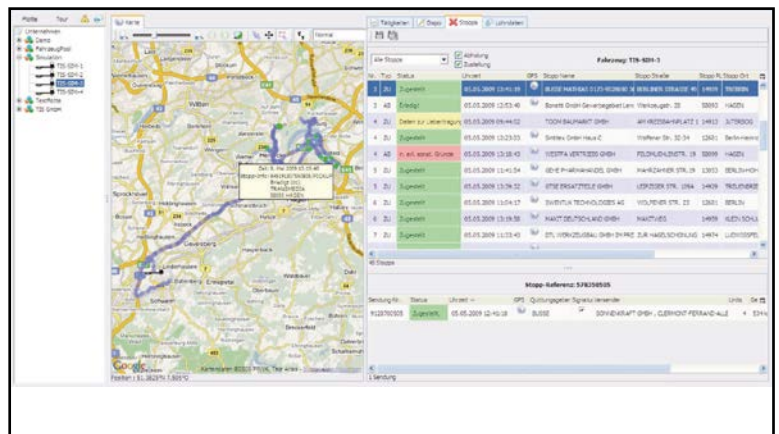


### HOW IT WORKS

TISLOG office Infodesk is the ideal component to expand your logistics and shipping software. TISLOG office Infodesk closes the information gap anywhere in your company where captured mobile data cannot seamlessly be processed by your IT applications.



As an example, not every software at your headquarters can automatically track all the orders that have been dispatched to your drivers. Thanks to TISLOG the status of each order is available at the click of a mouse; providing the processing status as entered by your drivers or the statuses provided by automated tracking. In many cases, the driver captures his drive and rest times, as well as the time it takes to process an order at a customer site. All this pertinent information is of no value if you are not able to access and analyze the data - if you do not have an overview of the data captured on the road.



TISLOG office Infodesk provides you with precisely these functionalities - ranging from fast order data entry by the dispatcher to order tracking and monitoring, from address and vehicle management to comprehensive data analysis. You can track your vehicles' routes via a digital map using the Geographic Information System (GIS) and communicate with your drivers via the integrated mail system.

An additional application arises, if you commission a subcontractor with the responsibility of managing a territory and would like to provide the subcontractor with orders without having to manage the associated planning and scheduling yourself. If this is the case, all you have to do is to provide your subcontractor Internet access to his data via Infodesk and the subcontractor can independently plan and schedule his own fleet.

### THE FEATURES AND BENEFITS

- **Geographic Information System (GIS)**  
with various map providers
- **Haul Status and Detailed Status Display**  
great overview, status of all hauls at a glance
- **Message Overview, Order Research**  
detailed and provides information pertinent to decision making
- **Employee Analysis/Evaluation, Activity Analysis/Evaluation**  
flexibility provided by different criteria
- **Driver Mail System**  
Direct contact with your drivers - easy to operate
- **Fast Order Data Entry**  
easy to use, with master address data
- **Order Dispatch**  
simply via drag&drop
- **Fleet Management, Driver Management, User Management**  
very flexible with several levels

**You don't need all of the features  
Infodesk has to offer?**

If this is the case - you can select the most suitable features for your specific requirements.

### UNIQUE FEATURES Infodesk OFFERS

**Simple and easy to use information processing:** Thanks to our drag&drop feature and selection fields you do not have to be a magician to enter and assign orders to your drivers and analyze data.

**Workstation Software Installation Not Required:** Infodesk is a browser based application, you can use Infodesk anywhere you have access to a browser and the Internet.

**A Multi-User Application:** Several users can work with Infodesk simultaneously. Our pricing is based on the number of simultaneous users and not on the number of potential users.